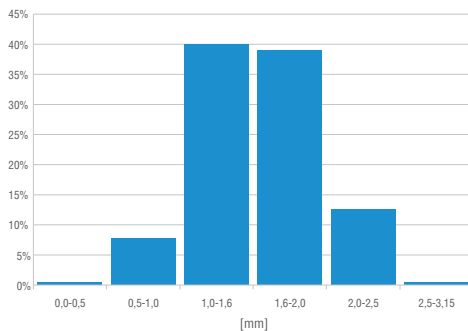


EPDM virgin granules vulcanised with sulphur, produced in Poland.

#### STANDARD GRAIN SIZE

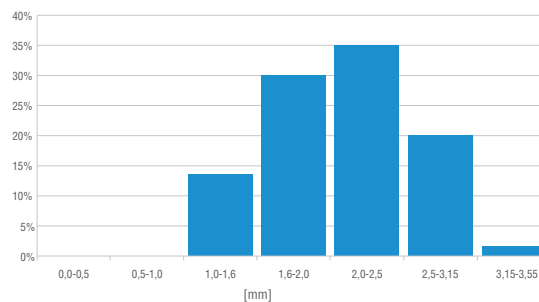
0,5 - 2,5 mm

SIEVE ANALYSIS 0,5 - 2,5 mm



1,0 - 3,0 mm

SIEVE ANALYSIS 1,0 - 3,0 mm



#### STANDARD COLOUR



Reseda green 6011  
(number = approximate RAL)

Test according to standard PN-EN 933-1:2012, average values.

#### PHYSICAL PROPERTIES

Property	Value/Tolerance	Unit	Test method
Density	1,58 +/- 0,03	[g/cm <sup>3</sup> ]	PN-EN ISO 1183-1:2019
Hardness	65 +/- 5	[ <sup>0</sup> Sh A]	PN-EN 868:2005
Tensile strenght	> 3	[MPa]	PN-ISO 37:2007
Elongation at break	> 300	[%]	PN-ISO 37:2007
Bulk density	approx. 650	[g/l]	PN-EN 1097-3:2000
Dust content	< 1	[%]	PN-EN 933-1:2012
Polymer content	> 22	[%]	
Base polymer	EPDM – ethylene propylene diene monomer		

Flammability class version standard:

C<sub>fl</sub>-S1

standard: PN-EN 13501-1+A1:2010

Flammability class version indoor:

B<sub>fl</sub>-S1

standard: PN-EN 13501-1+A1:2010

#### ENVIRONMENTAL PARAMETERS

Standard	Result
DIN EN 71-3:2013-05 Migration of certain elements	Fulfills requirements
AfPS GS 2014:01, PAH Category 1	Fulfills requirements
DIN 18035-7, DOC, EOX, heavy metals, other	Fulfills requirements

The data presented in the technical data sheet indicate average product parameters. Deviations from the stated values are possible. The final decision on the use of the granules belongs to the surface contractor, who is obliged to check the quality and suitability of the product for the given application before installation. We reserve the right to make changes to the product.

The actual colour of the granules may differ from the photo, which is due to the lighting used and the monitor settings. It is recommended to refill the infill on the field regularly, always with the same product from the same manufacturer. The field should be decompacted and brushed regularly.

It is forbidden to use oils, strong chemicals, solvents, bleaches, gasoline, diesel oil, lubricants.

Last update 01/2022