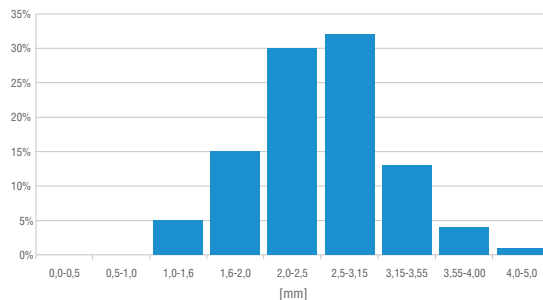


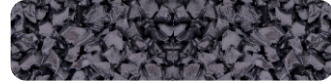
STANDARD GRAIN SIZE

1,0 - 4,0 mm

SIEVE ANALYSIS 1,0 - 4,0 mm



STANDARD COLOUR



Black 9005 SBR

Test according to standard PN-EN 933-1:2012, average values.

TECHNICAL DATA SHEET

Property	Value/Tolerance	Unit	Test method
Density	1,25 +/- 0,03	[g/cm ³]	PN-EN ISO 1183-1:2019
Hardness	60 +/- 5	[°Sh A]	PN-EN 868:2005
Tensile strength	> 5	[MPa]	PN-ISO 37:2007
Elongation at break	> 500	[%]	PN-ISO 37:2007
Bulk density	550 +/- 10	[g/l]	PN-EN 1097-3:2000
Base polymer	SBR - styrene-butadiene		

The data presented in the technical data sheet indicate average product parameters. Deviations from the stated values are possible. The final decision on the use of the granules belongs to the surface contractor, who is obliged to check the quality and suitability of the product for the given application before installation. We reserve the right to make changes to the product.

Pictures presented show granules with an aliphatic binder. The actual colour of the surface may differ from the photo, which is due to the lighting used and the monitor settings. The colour of the loose granules is different from presented photos.

In order to avoid damage of the surface, it is recommended to regularly clean the surface: remove dirt, wash the surface, with particular caution when using pressure washers. It is forbidden to use oils, strong chemicals, solvents, bleaches, gasoline, diesel oil, lubricants.

In order to extend the lifespan of the surface, it is recommended to protect the surface from the sun rays and use a top coat sealer to rejuvenate your surface every two to three years.

Last update 01/2020

Zakład Przemysłu Gumowego „STARGUM” Jan Stankiewicz

ul. Ciepłna 7
PL 73-110 Stargard

tel.: +48 91 578 80 08
fax: +48 91 577 77 68

sales@stargum.pl
www.stargum.pl

Tax Id: PL8540003383
REGON: 810182132