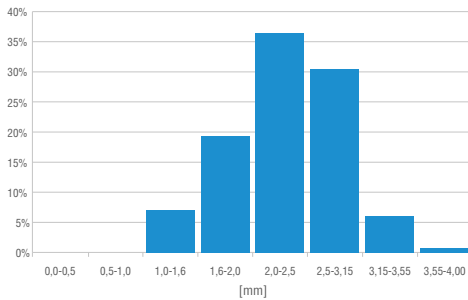




STANDARD GRAIN SIZE

1,0 - 3,5 mm

SIEVE ANALYSIS 1,0 - 3,5 mm



Test according to standard PN-EN 933-1:2012

Average values



TECHNICAL DATA SHEET

| Property | Value/Tolerance | Unit | Test method |
|---------------------|-----------------|----------------------|-----------------------|
| Density | 1,2 +/- 0,03 | [g/cm ³] | PN-EN ISO 1183-1:2019 |
| Hardness | 70 +/- 5 | [⁰ Sh A] | PN-EN 868:2005 |
| Tensile strength | > 3,5 | [MPa] | PN-ISO 37:2007 |
| Elongation at break | > 300 | [%] | PN-ISO 37:2007 |
| Bulk density | 470 | [g/l] | PN-EN 1097-3:2000 |
| Polymer content | > 35 | [%] | |
| Base polymer | EPDM/PP | | |

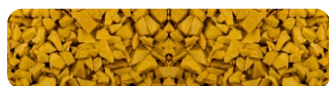
ENVIRONMENTAL PARAMETERS

| Standard | Result |
|---------------------------------|-----------------------|
| AfPS GS 2014:01, PAH Category 2 | Fulfills requirements |

STANDARD COLOURS (number = approximate RAL)



Sand yellow 1002



Yellow 1012



Ivory 1014



Light ivory 1015



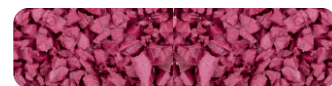
Orange 2008



Red 3016



Rose 3017



Red violet 4002



Blue lilac 4005



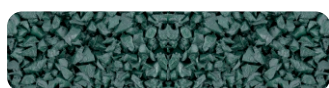
Gentian blue 5010



Light blue 5012



Sky blue 5015



Moss green 6005



May green 6017



Pale green 6021



Dusty grey 7037



Agate grey 7038



Beige brown 8024



Pure white 9010

The data presented in the technical data sheet indicate average product parameters. Deviations from the stated values are possible. The final decision on the use of the granules belongs to the surface contractor, who is obliged to check the quality and suitability of the product for the given application before installation. We reserve the right to make changes to the product.

Pictures presented show granules with an aliphatic binder. The actual colour of the surface may differ from the photo, which is due to the lighting used and the monitor settings. The colour of the loose granules is different from presented photos.

In order to avoid damage of the surface, it is recommended to regularly clean the surface: remove dirt, wash the surface, with particular caution when using pressure washers. It is forbidden to use oils, strong chemicals, solvents, bleaches, gasoline, diesel oil, lubricants.

In order to extend the lifespan of the surface, it is recommended to protect the surface from the sun rays and use a top coat sealer to rejuvenate your surface every two to three years.

Last update 01/2020

Zakład Przemysłu Gumowego „STARGUM” Jan Stankiewicz

ul. Ciepłna 7
PL 73-110 Stargard

tel.: +48 91 578 80 08
fax: +48 91 577 77 68

sales@stargum.pl
www.stargum.pl

Tax Id: PL8540003383
REGON: 810182132